

Western blotting
(protein immunoblot)
CPSC 265, class 14

Northern, Southern, Western

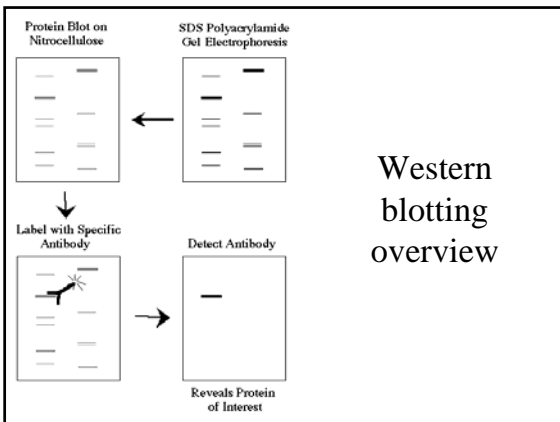


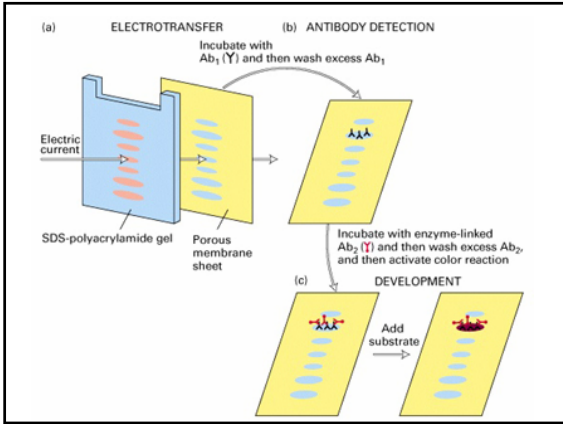
Ed Southern:

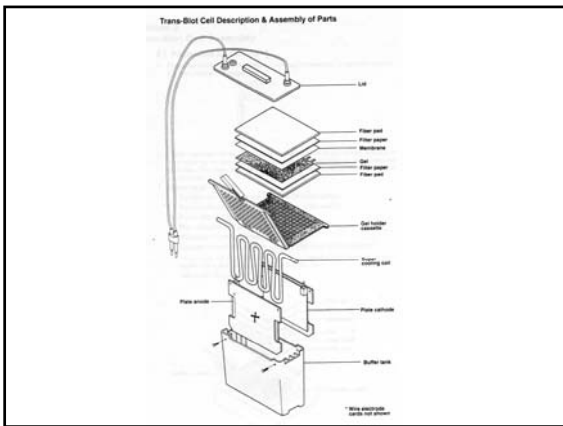
Attractive fellow from Oxford

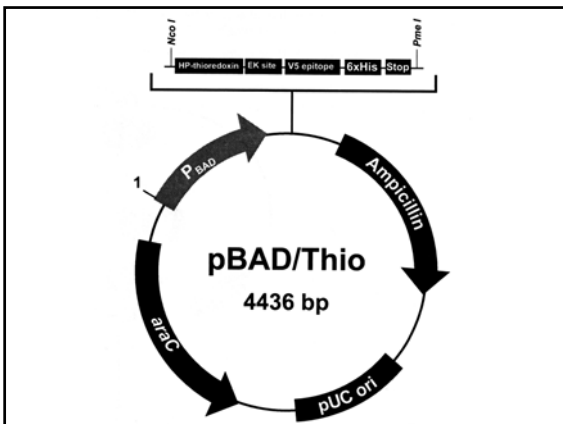
In the 1970s Ed Southern of Oxford University invented a revolutionary DNA blotting technique.

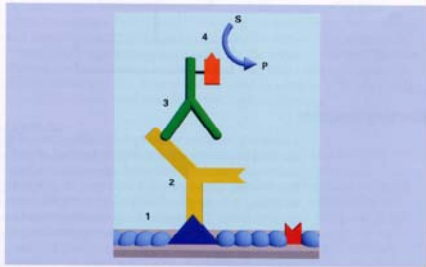
The Southern Blot allows the visualization of one DNA fragment from a whole genome DNA extract.











Specific enzymatic detection of membrane bound antigens. 1. Gelatin blocks unoccupied sites on the membrane. 2. Primary antibody to a specific antigen is incubated with the membrane. 3. A blotting grade antibody enzyme conjugate is added to bind to the primary antibody. 4. Substrate reagent is then added to the blot. The enzyme catalyzes the substrate to form a detectable product at the site of the antigen-antibody complex.
